

# newcondos

*Food, film and all kinds of fun*

Entertainment District's The Bond condos

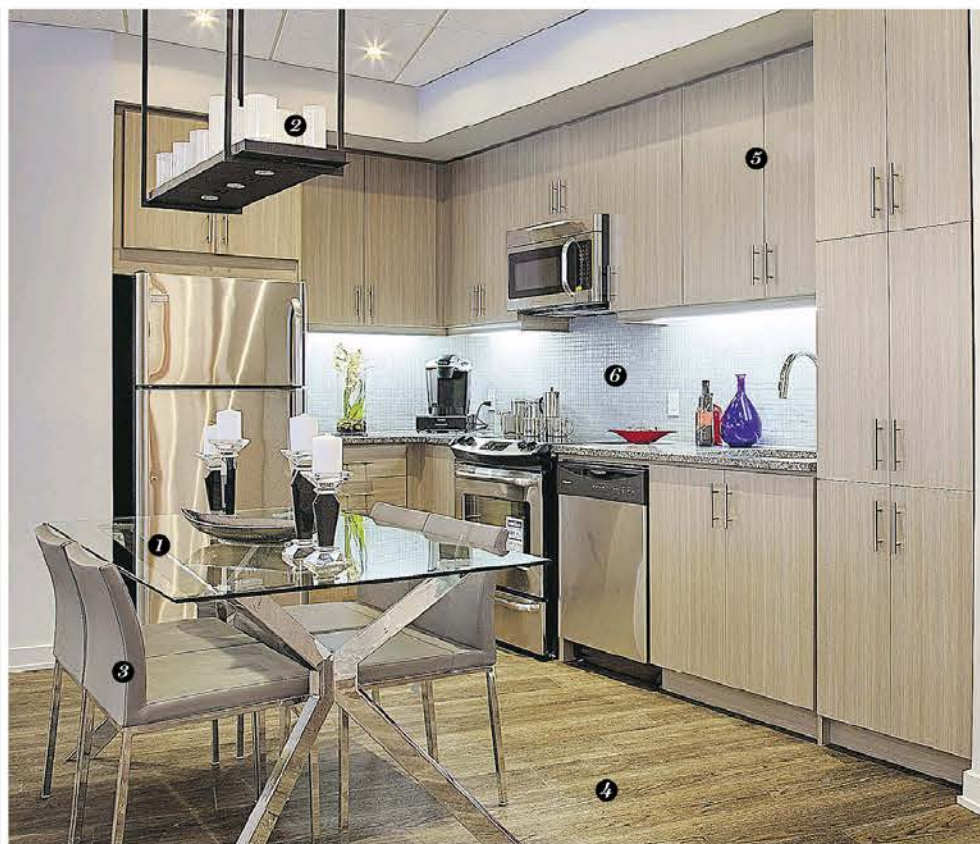
LISA VAN DE VEN  
Steps Away

**B**rian Brown knows the Entertainment District well. The vice-president of Lifetime Developments is on his third project in the downtown Toronto neighbourhood. The Bond Condominiums, well into construction, has a bustling Adelaide and John location. "As far as life and activity and being at the centre of so many different tractions, it's a fantastic area," Mr. Brown says. "It's exciting and a great place to live." It's within easy walking distance of a range of entertainment options, from Queen Street West shopping, to Blue Jays games and the Art Gallery of Ontario — and it's in the middle of everything Toronto International Film Festival related. "It's definitely one of my favourite parts of the city," the developer adds. Here's what's nearby:

**25 Steps** While there is retail planned for the base of The Bond, Lifetime still hasn't determined what will make the cut. But there's likely no need for a new Thai restaurant, as Mr. Brown's favourite, Khao San Road, is just a few doors away, perfect for an after-work meal.

**50 Steps** While the original Bond (James) may have preferred martinis, even he couldn't go without a choice of foods. Residents of The Bond will have that, too. Situated along John Street, there's The Office Pub, Milestone's Bar + Grill, The Town Crier Pub + Halfway Beer House and Jack Astor's Bar and Grill. Meanwhile, Byblos — another favourite of Mr. Brown's — is on Duncan Street. "It's Eastern Mediterranean food with a local twist," he says. "And they have an amazing mixologist there." When it comes time to finish off the night, there's a little something for everyone too, including the Scotiabank Theatre, bowling at The Ballroom, the Rock 'n' Horse Saloon and the nightclub Fiction.

**150 Steps** With the TIFF Bell Lightbox only a short walk away, cinephiles and stargazers alike have somewhere to gather, especially during TIFF. As well as the movie theatres and cinematic programming, the centre features two Oliver + Bonacini restaurants. "I also like that it's got kids' programs ... that has really filled a void of something that is in high-demand in this area," Mr. Brown says. Meanwhile, for those who prefer to sit back and take in their en-



## Paced design

A little something for every potential buyer in the model suite at Pace on Main in Stouffville *By Lisa Van de Ven*

The location might be Stouffville, but the design is "downtown urban." It's what designer Liz McKay aimed for in the kitchen model vignette at Pace on Main. "The builder wanted something sleek and modern — something that felt downtown," says the senior designer with Bryon Patton and Associates. "We didn't want it to look too contemporary, though." The idea was to appeal to both younger and older buyers, and to offer something for both the contemporary- and traditional-minded among them. With that in mind, the kitchen features contemporary flat-front melamine cabinetry, paired with more traditional granite countertops. "It's an urban, clean-lined, but transitional look," Ms. McKay says. Suites at Pace on Main, by Geranium Homes, range in size from 650 to 1,129 square feet, and are priced from \$314,900 to \$765,900. The sales office is located at 6212 Main St., Stouffville and is open Monday to Wednesday from 11 a.m. to 7 p.m. and weekends and holidays from 11 a.m. to 5 p.m. Call 905-591-1071 or visit geraniumhomes.com.

**1** "We wanted something that would float in the space," Ms. McKay says of this dining table, which features a glass top set on an X-shaped chrome base. "The idea is that it could be multipurpose, acting as an island work surface as well as a dining table."

**4** It's neither wood nor laminate. In fact, the floor is vinyl tile. "It's becoming more popular, for both its durability and aesthetic," says Ms. McKay, who showcased the material in the high-traffic model as a way to introduce people to the look. "The colour rendition is phenomenal."

**2** Designed to mimic a classic Holly Hunt candle fixture, this chandelier has faux candles but the lighting itself is electric. But the fixture does tie in with the traditional black glass candlesticks on the table below. "Again, it's that transitional look," the designer adds.

**5** These flat-front taupe melamine cabinets may feature graining to add visual interest, but there's very little actual texture. "It's a smooth finish," says Ms. McKay, who paired the doors with simple chrome pulls that go well with the sleek look. "They always look great," she says.

**3** Simple but sleek chairs sourced from sohoConcept surround the dining table, and feature chrome legs to match the chrome of the table's base. Here the metal is paired with taupe-grey faux leather on the upholstered seats. "That pulls in some of the colour in the cabinetry," Ms. McKay explains.

**6** Granite countertops offer a more traditional touch, juxtaposed with a contemporary glass mosaic tile backsplash. The taupe-grey backsplash picks up the undertones of the cabinets, while "the texture looks great with the smooth door," Ms. McKay adds. Undermount lighting highlights the feature.

### FOR SALE



Price range: \$339,900 to \$379,900 (current release only)  
Location: Huntsville

#### FOUR SEASONS

Across from Deerhurst Resort, TreeTops at Hidden Valley is a Muskoka four-seasons project overlooking Peninsula Lake. The site will have a series of buildings, each made up of several condo units, with 120 suites planned in total. Designed by The Ventin Group, with interiors by Bryon Patton & Associates; one first-phase villa has already been built.

**Builder/developer** Club Leisure Corp.

**What's new** Three units are ready for immediate move-in.

**Building** A series of 13 three-storey buildings

**Suites** Two-bedroom-plus-den layouts

**Size** 1,258 to 1,408 square feet.

**Features** Stainless steel appliances, granite counters and balconies or walkouts.

**Amenities** Hidden Valley Highlands Ski Club membership.

**Standouts** Geothermal heating and cooling.

**Sales office** 1 TreeTops Lane, Huntsville. Thursday to Monday 11 a.m. to 5 p.m. 1-855-784-9990 or treetopshuntsville.com.

L.V., National Post



Price range: From the low \$300,000s  
Location: Kingston Road and Victoria Park Avenue, Scarborough

#### BEACH EAST

A mid-rise building by Teeple Architects, Kingston&Co is a short trip from the Scarborough Bluffs and the Beach, and Kingston Road's shops, cafés and public transit.

**Builder/developer** TAS and Main and Main Developments

**What's new** Grand opening of the site's sales office Sept. 13

**Building** A stepped design of eight and 10 storeys

**Suites** Studio to three-bedroom-plus-den layouts

**Size** 420 to 1,527 square feet

**Occupancy** Early 2017

**Features** Nine-foot ceilings, engineered hardwood floors, stone counters, sliding glass bedroom doors in some units.

**Amenities** A gym, a party room, barbecue areas, a kitchen, a rooftop garden, car- and dog-wash stations, a workshop.

**Standouts** Many energy-efficient features

**Sales office** 1089 Kingston Rd., Scarborough. Monday to Friday 11 a.m. to 7 p.m., weekends noon to 5 p.m. Call 647-558-5500 or visit kingstonandco.ca.

tainment, there's also The Princess of Wales Theatre and Roy Thomson Hall – both just minutes from the site (no excuse to be late for a performance!).

Suites at The Bond Condominiums range from 524 to 3,728 square feet and from \$371,900 to over \$3-million. The sales office is at 373 King St. W., Suite 302, Toronto, and open Monday to Thursday noon to 6 p.m. and weekends and holidays noon to 5 p.m. Call 416-546-7525 or visit thebond.ca.

National Post



JONATHAN RIVAIT / NATIONAL POST

L.V., National Post

## MORTGAGE RATES 10.09.14

Rates are subject to change. Selection of financial institutions may vary weekly. Figures supplied by Fiscal

	Variable rate	6 months	1yr	2yr	3yr	4yr	5yr		Variable rate	6 months	1yr	2yr	3yr	4yr	5yr
<b>BANKS</b>								<b>TRUST LOAN</b>							
ATB Financial	2.70	4.00-6.30op	2.94-6.30op	2.89-6.50op	2.99	3.04	3.29	Community Trust	n/a	6.50	3.14	3.25	3.95	4.74	4.99
Alterna Svgs/Alterna Bk	2.60	4.00-6.30op	2.98-6.30op	2.98	2.98	2.94	3.19	Concentra Financial	n/a	5.00-6.70op	2.99-6.30op	3.04	3.44	3.94	4.79
Bank of Montreal	3.00	4.00-6.30op	3.14-6.30op	3.04	3.85	4.39	2.99	Effort Trust	n/a	4.45-6.30op	3.45-6.30op	3.60	3.70	4.60	4.95
Bank of Nova Scotia	2.60	4.55-6.45op	3.29-6.50op	2.97	3.44	2.89	3.09	Home Trust Company	2.50	3.95	2.89	2.89	2.79	2.94	2.99
Canadian Western Bank	-	4.00-6.45op	3.14-6.30op	3.04	3.75	4.39	4.99	Investors Group Trust	n/a	4.20-6.50op	3.14-6.30op	3.14	3.75	4.64	4.99
CFF Bank	-	-	3.69	3.75	2.59	3.79	3.04	MTCC	2.60	4.55-6.45op	3.29-6.50op	2.97	3.44	2.89	3.09
CIBC	3.00	6.70op	2.99-6.35op	2.79	3.65	2.89	4.99	<b>OTHER</b>							
Equitable Bank	-	-	3.14	3.04	3.75	4.54	4.94	Airline Financial C.U.	4.00	-	3.01-6.25op	3.10	3.33	3.65	3.99
ICICI Bank Canada	3.05	-	3.15	3.65	3.64	3.69	3.89	Comtech Credit Union	2.95	6.20-6.40op	2.99-6.30op	3.25	3.29	2.99	3.09
Manulife Bank	2.70	4.45	3.00-3.50op	3.05	3.10	3.14	3.19	DUCA Credit Union	2.55	-	3.09-5.75op	3.00	2.99	3.09	3.04
National Bank	n/a	4.40-6.70op	3.14-6.70op	3.04	3.75	2.95	3.39	First National Fin. LP	-	3.95	2.99	2.34	2.69	2.77	3.09
President's Choice Finan	3.00	-	-	2.94	2.84	2.89	4.44	FirstOntario C.U.	2.60	6.34op	3.09-6.34op	3.14	3.29	2.84	3.19
Royal Bank	3.00	6.30op	3.14-6.30op	3.04	3.75	4.54	4.94	Industrial Alliance/IAP	-	-	3.24	3.04	3.19	3.24	3.94
TD Canada Trust	3.00	-	3.09-6.30op	2.34	3.44	3.94	4.79	Luminus Financial	2.70	-	2.95-6.30op	2.30	2.80	2.85	3.05
Tangerine	3.00	-	3.19	3.24	3.49	3.69	3.79	MCAP	2.55	-	3.60	3.95	4.35	4.89	5.14
								Meridian Credit Union	2.75	4.00	3.09-6.30op	2.65	3.65	3.29	3.19
								PACE Savings & C.U.	-	5.00-6.70op	2.99-6.30op	3.04	2.79	2.94	3.09
								Parama Credit Union	2.85	-	2.85-3.00op	3.05	3.15	3.25	3.40

\*Also offer 7- to 10-year mortgages. op = open mortgage. n.a. = not available from company. ro=renewals only dashes (-) mean companies not quoting at present.